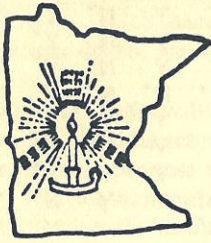
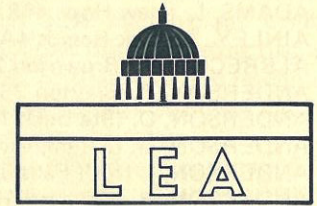


# 1980 REPORT on the MINNESOTA LEGISLATURE



by the  
LEGISLATIVE EVALUATION ASSEMBLY  
of MINNESOTA, INC.  
for an  
INFORMED CITIZENRY  
1980



The Legislative Evaluation Assembly of Minnesota, Incorporated (LEA), is a non-profit, non-partisan corporation established to keep the citizens of Minnesota informed of both important legislation and the voting performance of each Representative and Senator in the Minnesota State Legislature.

LEA bases its evaluation on these principles: the American form of government, federalism, social pluralism and constitutionalism; strictly limited government spending, taxation and areas of activity; national sovereignty and strength; legal and moral order with justice; private property, a free market economy, and individual initiative; freedom and dignity of the individual.

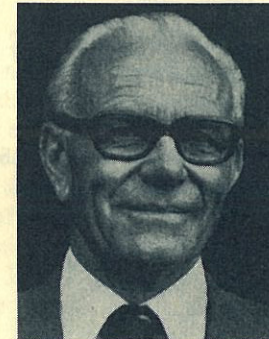
LEA conducts its analysis and all its other activities solely with voluntary efforts and has no other income than from donations and the sale of its reports. Your donations and orders are needed to make it possible for LEA to continue its work.



REP. ALBRECHT



REP. KVAM



REP. NIEHAUS

## THREE REPRESENTATIVES SHARE TOP RATING

LEA is pleased to present its evaluation of the 134 Representatives and 67 Senators during the 1980 session. Representatives Raymond Albrecht of Brownton, Adolph Kvam of Litchfield, and Joe T. Niehaus of Sauk Centre achieved perfect voting scores. Other Representatives meriting honorable mention are David Jennings of Truman, Ray Welker of Montevideo, Gaylin Den Ouden of Prinsburg, Cal Ludeman of Tracy, Richard Wigley of Lake Crystal, Don Valento of Little Canada, Elliot Rothenberg of St. Louis Park, John Biersdorf of Owatonna, Bob Haukoos of Albert Lea, Tony Onnen of Cokato, Elton Redalen of Fountain, William Crandall of Minneapolis, Wendell Erickson of Hills, Terry Dempsey of New Ulm, Gilbert Esau of Mountain Lake, Don Friedrich of Rochester, K. J. McDonald of Watertown, Sally Olsen of St. Louis Park, Bill Peterson of Bloomington, and Paul Thiede of Pequot Lakes. For the second consecutive year, no State Senator rated high enough to merit special recognition. Perhaps the November elections will produce a Senate that will compare more favorably with the House.

## 1980 MAY SET TREND FOR DECADE

The large number of incumbent legislators either retiring or running for other offices makes the 1980 election as potentially pivotal as the elections in the early 1970's which brought in scores of aggressive liberal legislators who set the political and social priorities of the decade with a flood of legislation that engulfed all aspects of public and private life. Whether you agree or disagree with LEA's stands on the legislation rated herein, this report will be useful in questioning legislative candidates, be they incumbents or newcomers, to discover those who will be most responsive to **your** views. (Note: If you do not know your legislative district or its candidates, your local newspaper, library, or political headquarters, or the LEA can supply this information.) LEA encourages the usage of the material in this Report, in whole or in part, by any group or individual.

# HOUSE

	1.	2.	3.	4.	5.	6.	7.	8.	9.	10.	11.	12.	13.	14.	15.	16.	%+
r AASNESS, P. (Wendell 11A)	N*	N*	Y	N*	Y*	N*	Y	N*	Y*	Y	N*	Y	Y	N*	Y*	Y*	69
d ADAMS, L. (New Hope 44B)	Y	Y	N*	Y	Y*	Y	Y	Y	N	Y	Y	Y	Y	N*	Y*	Y*	31
r AINLEY, J. (Park Rapids 4A)	N*	Y	Y	N*	Y*	Y	N*	N*	Y*	Y	N*	Y	Y	N*	Y*	Y*	63
r ALBRECHT, R. (Brownton 23A)	N*	N*	N*	N*	Y*	N*	N*	N*	Y*	N*	N*	N*	N*	N*	Y*	Y*	100
d ANDERSON, B. (Slayton 26A)	Y	N*	N*	Y	Y*	Y	N*	Y*	Y	Y	Y	Y	Y	Y	Y*	Y*	44
r ANDERSON, D. (Starbuck 15A)	Y	N*	Y	N*	—	N*	Y	N*	Y*	Y	N*	Y	Y	N*	Y*	Y*	60
d ANDERSON, G. (Bellingham 15B)	Y	Y	N*	Y	Y*	N*	Y	Y	N	—	Y	Y	Y	Y	Y*	Y*	33
d ANDERSON, I. (Int'l Falls 3A)	Y	Y	N*	Y	Y*	Y	Y	Y	N	—	Y	N*	Y	Y	N	Y*	27
r ANDERSON, R. (Ottertail 10B)	Y	Y	N*	N*	Y*	Y	Y	Y	Y*	Y	Y	N*	Y	—	Y*	Y*	47
d BATTAGLIA, D. (Two Harbors 6B)	Y	Y	N*	Y	Y*	Y	Y	Y	N	Y	Y	N*	Y	N*	N	Y*	31
d BEGICH, J. (Eveleth 6A)	Y	Y	N*	Y	Y*	Y	N*	Y	N	Y	Y	N*	Y	N*	N	Y*	38
d BERGLIN, L. (Mpls. 59A)	Y	Y	Y	—	N	Y	Y	Y	N	Y	Y	—	Y	Y	N	Y*	7
d BERKELMAN, T. (Duluth 8B)	Y	Y	N*	Y	Y*	Y	Y	Y	Y*	Y	Y	Y	Y	N*	Y*	Y*	38
r BIERSDORF, J. (Owatonna 32A)	N*	N*	N*	N*	Y*	Y	N*	N*	Y*	Y	N*	N*	Y	N*	Y*	Y*	81
r BLATZ, K. (Bloomington 38A)	Y	Y	N*	Y	Y*	Y	N*	Y	Y*	Y	Y	Y	Y	Y	N	Y*	31
d BRINKMAN, B. (Richmond 16B)	Y	Y	N*	Y	Y*	N*	N*	Y	N	Y	Y	N*	Y	N*	Y*	Y*	50
d BYRNE, P. (St. Paul 64B)	Y	Y	N*	Y	N	Y	Y	Y	N	Y	Y	Y	Y	Y	N	Y*	13
r CARLSON, D. (Sandstone 14A)	Y	N*	Y	N*	Y*	Y	N*	Y	N	Y	Y	Y	Y	N*	N	Y*	38
d CARLSON, L. (Brooklyn Ctr 44A)	Y	Y	N*	Y	Y*	Y	Y	Y	N	Y	Y	Y	Y	Y	N	Y*	19
d CASSERLY, J. (Mpls. 56A)	Y	Y	Y	Y	Y*	Y	Y	Y	N	Y	Y	Y	—	Y	N	Y*	13
d CLARK, J. (Mpls. 60A)	Y	Y	Y	Y	Y*	Y	Y	Y	N	Y	Y	Y	Y	Y	N	Y*	13
d CLAWSON, J. (Center City 19A)	Y	Y	Y	Y	Y*	Y	Y	Y	Y*	Y	—	Y	Y	Y	N	Y*	20
d CORBID, J. (Oklee 1B)	Y	Y	N*	Y	Y*	Y	N*	Y	N	Y	Y	Y	Y	Y	—	Y*	27
r CRANDALL, W. (Mpls. 61A)	N*	N*	N*	N*	—	N*	N*	N*	Y*	Y	Y	Y	N*	N*	Y*	Y*	80
r DEAN, W. (Mpls. 58A)	—	Y	Y	—	Y*	N*	Y	—	Y*	—	Y	—	—	N*	Y*	—	—
r DEMPSEY, T. (New Ulm 28B)	N*	N*	Y	N*	Y*	N*	N*	N*	Y*	Y	N*	Y	Y	N*	Y*	Y*	75
r DEN OUDEN, G. (Prinsburg 21B)	N*	N*	Y	N*	Y*	N*	N*	N*	Y*	N*	N*	N*	Y	N*	Y*	Y*	88
r DREW, J. (St. Paul 63B)	Y	N*	N*	N*	Y*	N*	Y	Y	Y*	N*	Y	N*	Y	N*	N	Y*	63
d EKEN, W. (Twin Valley 2B)	Y	Y	Y	—	Y*	Y	Y	Y	N	—	Y	—	Y	N*	N	Y*	23
d ELIOFF, D. (Virginia 5A)	Y	Y	N*	Y	Y*	Y	Y	Y	N	Y	Y	N*	Y	N*	N	Y*	31
d ELLINGSON, R. (Brooklyn Ctr 45B)	Y	Y	N*	Y	N	Y	Y	Y	N	Y	Y	Y	Y	Y	N	Y*	13
r ERICKSON, W. (Hills 26B)	N*	N*	Y	N*	Y*	N*	Y	N*	Y*	—	N*	N*	Y	N*	Y*	Y*	80
r ESAU, G. (Mountain Lake 28A)	N*	N*	Y	N*	Y*	N*	Y	N*	Y*	Y	N*	N*	Y	N*	Y*	Y*	75
r EVANS, J. (Detroit Lakes 10A)	Y	Y	Y	N*	Y*	Y	Y	Y	Y*	Y	Y	Y	Y	N*	Y*	Y*	38
r EWALD, D. (Minnetonka 40A)	N*	Y	Y	N*	Y*	Y	Y	N*	Y*	Y	Y	Y	—	N*	Y*	Y*	53
d FARICY, R. (St. Paul 63A)	Y	N*	N*	Y	N	N*	Y	Y	N	N*	Y	Y	Y	Y	N	Y*	31
r FJOSLIEN, D. (Brandon 11B)	Y	Y	N*	N*	Y*	N*	Y	Y	Y*	Y	Y	Y	Y	Y	Y*	Y*	44
r FORSYTHE, M. (Edina 39A)	N*	Y	Y	N*	—	Y	N*	N*	Y*	Y	Y	Y	—	Y	Y*	Y*	50
r FRIEDRICH, D. (Rochester 32B)	N*	N*	Y	N*	Y*	N*	N*	N*	Y*	Y	N*	Y	Y	N*	Y*	Y*	75
r FRITZ, M. (St. Paul 62B)	Y	N*	Y	N*	Y*	N*	N*	N*	Y*	N*	Y	Y	N*	Y	N	Y*	63
d FUDRO, S. (Mpls. 55A)	Y	Y	Y	N*	Y*	Y	Y	Y	N	Y	Y	Y	Y	Y	N	Y*	19
d GREENFIELD, L. (Mpls. 57B)	Y	Y	Y	Y	N	Y	Y	Y	N	Y	Y	Y	Y	Y	N	Y*	6
r HALBERG, C. (Burnsville 53B)	N*	N*	Y	N*	Y*	N*	N*	Y	Y*	Y	Y	Y	—	N*	Y*	Y*	67
r HAUKOOS, M. (Albert Lea 31A)	N*	N*	Y	N*	Y*	N*	N*	N*	Y*	Y	Y	N*	N*	N*	Y*	Y*	81
r HEAP, J. (Robbinsdale 43B)	Y	Y	N*	N*	Y*	Y	N*	N*	Y*	Y	Y	Y	Y	N*	Y*	Y*	56
r HEINITZ, O. (Wayzata 43A)	N*	Y	Y	—	—	Y	N*	N*	Y*	Y	—	Y	Y	N*	Y*	Y*	54
r HOBERG, D. (Moorhead 9A)	Y	N*	Y	Y	Y*	Y	N*	Y	Y*	Y	N*	Y	Y	N*	Y*	Y*	50
d HOKANSON, S. (Richfield 37A)	Y	Y	N*	Y	—	Y	Y	Y	Y*	Y	Y	Y	Y	Y	N	Y*	20
d JACOBS, J. (Coon Rapids 47A)	Y	Y	N*	Y	Y*	Y	Y	Y	N	Y	Y	Y	Y	Y	N	Y*	19
d JAROS, M. (Duluth 7B)	Y	Y	Y	Y	N	N*	Y	Y	N	Y	Y	Y	—	Y	N	—	7
r JENNINGS, D. (Truman 27B)	N*	N*	Y	N*	—	N*	N*	N*	Y*	N*	N*	N*	N*	N*	Y*	Y*	93
d JOHNSON, C. (St. Peter 23B)	Y	Y	Y	Y	Y*	Y	Y	Y	Y*	Y	Y	Y	—	Y	Y*	Y*	27
r JOHNSON, D. (Willmar 21A)	Y	N*	Y	N*	Y*	Y	N*	Y	Y*	Y	Y	Y	—	N*	Y*	Y*	53
d JUDE, T. (Mound 42A)	Y	Y	N*	Y	Y*	Y	N*	Y	Y*	Y	Y	N*	Y	Y	N	Y*	38
d KAHN, P. (Mpls. 57A)	Y	Y	Y	Y	N	Y	Y	Y	N	Y	Y	Y	—	Y	N	Y*	7
r KALEY, J. (Rochester 33A)	N*	N*	Y	N*	Y*	Y	N*	N*	Y*	Y	Y	Y	Y	N*	Y*	Y*	63
d KALIS, H. (Walters 30A)	N*	Y	Y	Y	Y*	N*	N*	Y	N	Y	Y	N*	Y	N*	Y*	Y*	50
d KELLY, R. (St. Paul 66B)	Y	Y	N*	Y	Y*	Y	Y	Y	Y*	Y	Y	Y	Y	Y	N	Y*	25
d KEMPE, R. (West St. Paul 53A)	Y	N*	N*	Y	—	Y	N*	Y	Y*	Y	Y	Y	Y	—	N	Y*	36
r KNICKERBOCKER, G. (Minnetonka 40B)	N*	Y	Y	N*	Y*	Y	N*	N*	Y*	Y	Y	Y	Y	N*	Y*	Y*	56
d KOSTOHRYZ, R. (North St. Paul 50B)	Y	Y	N*	Y	Y*	Y	N*	Y	Y*	Y	Y	Y	Y	Y	N	Y*	31
d KROENING, C. (Mpls. 54A)	Y	Y	N*	Y	Y*	Y	Y	Y	N	Y	Y	Y	Y	Y	N	Y*	19
r KVAM, A. (Litchfield 22A)	N*	N*	N*	N*	Y*	N*	N*	N*	Y*	N*	N*	N*	N*	N*	Y*	Y*	100
r LAIDIG, G. (Stillwater 51A)	N*	Y	Y	N*	Y*	Y	Y	Y	N	—	Y	—	Y	N*	Y*	Y*	50
d LEHTO, A. (Duluth 8A)	Y	Y	N*	Y	N	Y	Y	Y	Y*	Y	Y	Y	N*	Y	Y*	N	25
r LEVI, C. (Dellwood 50A)	N*	Y	Y	N*	Y*	Y	N*	N*	Y*	Y	Y	Y	—	Y	Y*	Y*	53

# HOUSE - Continued

	1.	2.	3.	4.	5.	6.	7.	8.	9.	10.	11.	12.	13.	14.	15.	16.	%+
d LONG, D. (Mpls. 56B)	Y	Y	Y	Y	N	Y	Y	Y	N	Y	Y	Y	Y	Y	—	Y*	7
r LUDEMAN, C. (Tracy 20B)	N*	N*	Y	N*	Y*	N*	N*	N*	Y*	N*	N*	N*	Y	N*	Y*	Y*	88
r LUKNIC, M. (Faribault 24B)	Y	Y	N*	Y	Y*	N*	Y	N*	Y*	Y	Y	Y	Y	N*	Y*	Y*	50
d MANN, G. (Windom 27A)	Y	Y	Y	Y	Y*	Y	Y	Y	Y*	Y	Y	Y	Y	N*	Y*	Y*	31
d MCCARRON, P. (Fridley 46A)	Y	Y	N*	Y	—	Y	Y	Y	Y*	Y	Y	Y	Y	Y	N	Y*	20
r MCDONALD, K. (Watertown 36A)	N*	N*	Y	N*	Y*	N*	N*	N*	Y*	Y	Y	Y	N*	N*	Y*	Y*	75
d MCEACHERN, B. (St. Michael 18B)	Y	Y	N*	Y	Y*	Y	N*	Y	Y*	Y	Y	N*	Y	N*	N	Y*	44
r MEHRKENS, L. (Red Wing 25B)	Y	N*	Y	N*	Y*	Y	Y	N*	Y*	N*	Y	Y	Y	N*	Y*	Y*	56
d METZEN, J. (South St. Paul 52A)	Y	N*	N*	Y	Y*	Y	Y	Y	Y*	—	Y	Y	Y	N*	Y*	Y*	47
d MINNE, L. (Hibbing 5B)	Y	Y	N*	Y	Y*	Y	Y	Y	N	Y	Y	N*	Y	Y	N	Y*	25
d MOE, D. (St. Paul 65B)	Y	Y	Y	Y	Y*	Y	Y	Y	N	Y	Y	—	Y	Y	N	—	7
d MUNGER, W. (Duluth 7A)	Y	Y	N*	Y	Y*	Y	Y	Y	N	Y	Y	Y	Y	Y	N	Y*	19
d MURPHY, M. (Hermantown 14B)	Y	Y	N*	Y	Y*	Y	Y	Y	N	Y	Y	Y	Y	Y	N	Y*	19
r NELSEN, B. (Staples 12A)	Y	N*	Y	N*	Y*	N*	Y	N*	Y*	Y	Y	Y	Y	N*	Y*	Y*	56
d NELSEN, M. (Aitkin 13B)	Y	Y	N*	Y	Y*	Y	Y	Y	Y*	Y	Y	N*	Y	Y	N	Y*	31
d NELSON, K. (Mpls. 59B)	Y	—	—	Y	Y*	—	Y	Y	N	Y	—	Y	Y	Y	N	Y*	16
r NIEHAUS, J. (Sauk Centre 16A)	N*	N*	N*	N*	Y*	N*	N*	N*	Y*	—	N*	N*	N*	N*	Y*	Y*	100
r NORMAN, J. (Mpls. 61B)	Y	Y	Y	N*	Y*	Y	Y	N*	Y*	N*	Y	Y	N*	N*	Y*	Y*	56
d NORTON, F. (St. Paul 65A)	Y	Y	N*	Y	Y*	Y	Y	Y	N	Y	Y	Y	Y	Y	N	Y*	19
d NOVAK, S. (New Brighton 48A)	Y	Y	N*	Y	—	Y	Y	Y	Y*	Y	Y	Y	Y	Y	N	Y*	20
r NYSETH, M. (Roseau 1A)	—	N*	Y	N*	Y*	N*	N*	N*	Y*	Y	N*	Y	Y	N*	Y*	Y*	73
r OLSEN, S. (St. Louis Park 41A)	N*	N*	N*	N*	Y*	N*	N*	N*	Y*	Y	Y	Y	N*	Y*	Y*	Y*	75
r ONNEN, T. (Cokato 22B)	Y	N*	Y	N*	Y*	N*	N*	N*	Y*	Y	N*	N*	N*	N*	Y*	Y*	81
d OSTHOFF, C. (St. Paul 64A)	Y	N*	N*	N*	N	Y	Y	Y	N	Y	Y	Y	Y	N*	N	Y*	31
d OTIS, T. (Mpls. 58B)	Y	Y	N*	Y	N	Y	Y	Y	N	Y	Y	Y	Y	Y	N	Y*	13
d PATTON, A. (Sartell 17A)	Y	N*	Y	Y	N	Y	N*	Y	N	Y	Y	Y	Y	Y	Y*	Y*	25
d PEHLER, J. (St. Cloud 17B)	Y	Y	Y	Y	—	Y	Y	Y	Y*	Y	Y	Y	Y	Y	Y*	Y*	20
d PETERSON, D. (Mpls. 60B)	Y	Y	Y	Y	Y*	Y	Y	Y	N	Y	Y	Y	Y	Y	N	Y*	13
r PETERSON, W. (Bloomington 38B)	Y	N*	N*	N*	Y*	Y	N*	N*	Y*	N*	Y	Y	N*	N*	Y*	Y*	75
r PIEPHO, M. (Mankato 29A)	N*	N*	Y	N*	Y*	N*	N*	N*	Y*	Y	Y	Y	Y	N*	Y*	Y*	69
r PLEASANT, R. (Bloomington 39B)	Y	N*	Y	Y	Y*	N*	N*	N*	N	Y	N*	Y	Y	N*	Y*	Y*	56
d PRAHL, N. (Grand Rapids 3B)	N*	N*	N*	—	Y*	Y	Y	Y	N	Y	Y	—	Y	Y	N	—	31
r REDALEN, E. (Fountain 35A)	N*	N*	Y	N*	Y*	N*	N*	N*	Y*	Y	N*	N*	Y	N*	Y*	Y*	81
d REDING, L. (Austin 31B)	Y	Y	Y	Y	Y*	Y	Y	Y	Y*	Y	Y	Y	Y	Y	Y*	Y*	25
r REES, T. (Elko 36B)	N*	N*	Y	N*	Y*	Y	N*	N*	Y*	N*	Y	Y	Y	N*	Y*	Y*	69
r REIF, R. (White Bear Lake 49B)	Y	N*	Y	Y	Y*	Y	N*	N*	Y*	Y	Y	Y	N*	Y	Y*	Y*	50
d RICE, J. (Mpls. 54B)	Y	Y	N*	Y	Y*	Y	Y	Y	N	—	Y	Y	Y	Y	N	Y*	20
d RODRIGUEZ, F. (St. Paul 67A)	Y	Y	Y	Y	Y*	Y	Y	Y	N	Y	Y	Y	Y	N*	N	Y*	19
r ROSE, J. (Roseville 48B)	N*	N*	Y	N*	Y*	N*	Y	N*	N	Y	Y	Y	N*	Y	Y*	Y*	56
r ROTHENBERG, E. (St. Louis Park 41B)	N*	N*	N*	Y	Y*	N*	N*	N*	Y*	—	N*	Y	N*	N*	Y*	Y*	87
d SARNA, J. (Mpls. 55B)	—	Y	N*	Y	Y*	Y	N*	N*	Y*	—	Y	Y	Y	Y	N	Y*	36
r SCHREIBER, W. (Brooklyn Park 45A)	N*	Y	Y	N*	—	Y	—	N*	Y*	Y	Y	Y	—	N*	Y*	Y*	54
r SEARLE, R. (Waseca 30B)	N*	Y	Y	N*	—	N*	N*	N*	—	Y	Y	Y	—	N*	Y*	Y*	62
r SEARLES, R. (Wayzata 42B)	N*	—	Y	N*	Y*	N*	N*	—	Y*	Y	Y	Y	N*	N*	Y*	Y*	71
r SHERWOOD, G. (Pine River 4B)	N*	Y	Y	N*	Y*	N*	N*	N*	Y*	Y	N*	Y	Y	N*	Y*	Y*	69
d SIEBEN, H. (Hastings 52B)	Y	N*	Y	Y	N	Y	Y	Y	Y*	Y	Y	Y	Y	Y	N	Y*	19
d SIEBEN, M. (Newport 51B)	Y	N*	Y	Y	Y*	Y	Y	Y	Y*	Y	Y	Y	Y	Y	N	Y*	25
d SIMONEAU, W. (Fridley 46B)	Y	Y	N*	Y	Y*	Y	Y	Y	N	Y	Y	Y	Y	N*	N	—	20
r STADUM, T. (Ada 2A)	Y	N*	Y	Y	Y*	N*	N*	Y	Y*	Y	N*	Y	Y	N*	Y*	Y*	56
d STOA, T. (Winona 34B)	Y	Y	Y	Y	—	Y	Y	—	N	—	Y	Y	Y	Y	N	Y*	8
r STOWELL, W. (Lewiston 34A)	N*	N*	N*	N*	Y*	—	N*	Y	Y*	Y	Y	Y	N*	N*	Y*	Y*	73
r SVIGGUM, S. (Nerstrand 25A)	Y	N*	Y	N*	Y*	Y	N*	N*	Y*	Y	N*	Y	N*	N*	Y*	Y*	69
d SWANSON, J. (Richfield 37B)	N*	Y	Y	N*	Y*	Y	Y	Y	Y*	Y	Y	Y	Y	N*	—	Y*	47
r THIEDE, P. (Pequot Lakes 13A)	N*	Y	Y	N*	Y*	N*	N*	N*	Y*	Y	N*	N*	Y	N*	Y*	Y*	75
d TOMLINSON, J. (St. Paul 67B)	Y	Y	N*	Y	N	Y	Y	Y	Y*	Y	Y	Y	Y	Y	N	Y*	19
r VALAN, M. (Moorhead 9B)	Y	N*	Y	Y	Y*	N*	N*	Y	Y*	Y	N*	Y	Y	N*	Y*	Y*	56
r VALENTO, D. (Little Canada 49A)	N*	N*	Y	N*	Y*	N*	N*	N*	Y*	N*	N*	Y	N*	N*	Y*	Y*	88
d VANASEK, R. (New Prague 24A)	Y	Y	N*	Y	Y*	Y	Y	Y	N	—	Y	Y	Y	Y	Y*	Y*	27
d VOSS, G. (Blaine 47B)	Y	Y	N*	Y	Y*	Y	Y	Y	N	Y	Y	—	Y	N*	N	Y*	27
d WALDORF, E. (St. Paul 66A)	Y	Y	Y	Y	N	Y	Y	Y	Y*	Y	Y	Y	—	N	N	Y*	13
r WEAVER, J. (Anoká 19B)	Y	N*	Y	N*	Y*	Y	N*	N*	Y*	Y	Y	Y	Y	N*	N	Y*	50
d WELCH, R. (Cambridge 18A)	Y	Y	N*	—	Y*	Y	Y	Y	Y*	Y	Y	Y	Y	Y	N	Y*	27
r WELKER, R. (Montevideo 20A)	N*	N*	Y	N*	Y*	N*	N*	N*	Y*	—	N*	N*	N*	N*	Y*	Y*	93
d WENZEL, S. (Little Falls 12B)	Y	N*	Y	Y	Y*	Y	Y	Y	Y*	Y	Y	Y	Y	N*	Y*	Y*	38
r WIESER, A. (LaCrescent 35B)	N*	N*	Y	N*	Y*	N*	N*	Y	N	Y	N*	Y	Y	Y	Y*	Y*	56
r WIGLEY, R. (Lake Crystal 29B)	N*	N*	Y	N*	Y*	N*	N*	N*	Y*	N*	N*	N*	Y	N*	Y*	Y*	88
d WYNIA, A. (St. Paul 62A)	Y	N*	N*	Y	N	N*	Y	Y	N	N*	Y	Y	Y	Y	N	Y*	31
r ZUBAY, K. (Rochester 33B)	N*	N*	Y	N*	Y*	Y	N*	N*	Y*	Y	Y	Y	Y	N*	Y*	Y*	63

# KEY VOTES

Y = Yes      d = Democratic-Farmer Labor  
N = No      r = Independent-Republican  
- means excused, absent, or not voting  
\* denotes vote favored by LEA  
%+ means percentage of legislator's votes that were correct according to LEA

Legislators absent for more than 5 votes are not rated.

**1. Omnibus Energy Bill (HF 1710):** Appropriates almost \$20 million for energy assistance grants and programs. This bill includes: \$5 million for low income families for heating fuel assistance (one-third of last winter's Federal aid for this purpose was unused); an insulation and weatherization inspection program performed by public utilities and largely funded by ratepayers (thus penalizing those customers who have already weatherized on their own); and grants to the state excessive powers in planning and regulating energy use and in spending the required funds. LEA opposed this bill, now law, which passed on final votes of 87-44 in the House, and 55-7 in the Senate. Authors: K. NELSON, HUMPHREY

**2. "Garbage Bill" (HF 2476):** This infamous appropriations bill provides over \$40 million in supplemental funds for state agencies and programs. Included in the spending portion are subsidies to AMTRAK and the Metropolitan Transit Commission and raids on the Game and Fish Fund, including payment of over \$1 million to Indians at the Leech Lake and White Earth reservations in return for transferring control of hunting, fishing, and trapping there by non-Indians to the DNR. In the non-spending portions of the bill, excellent items such as limitation of product liability claims against non-manufacturers and the refusal to finance the State Zoo's monorail are outweighed by other provisions such as authorizing the St. Paul People Mover and allowing University of Minnesota employees to strike. LEA strongly opposes this horrendous bill, now law, which passed on final votes of 75-57 in the House, and 48-12 in the Senate. Author: VOSS

**3. Gas Tax (HF 8):** The final form of this bill increased the gasoline tax from nine to eleven cents per gallon, with the additional revenues going to the State Highway Fund. Minnesota's transportation problems will not be solved by increasing the tax burden of people who must use their vehicles in their employment. With inefficient state highway crews, overly ambitious acquisition and contracting practices, and cosmopolitan sound barriers, the Minnesota Transportation Department is sorely in need of reforms. Efficiency reforms, along with usage of existing revenues generated by vehicle license fees and sales taxes which now go to the General Fund, could adequately serve Minnesota's highway needs. LEA opposed this bill, now law, which passed on final votes of 75-58 in the House, and 48-14 in the Senate.

**4. Housing "Discrimination" (HF 1012):** This bill prohibits discrimination against families with children in housing and real estate with certain exceptions. Other well-intentioned legislation such as rent control, government housing projects, rent subsidies to welfare tenants, and bureaucratic harassment of landlords have created a housing nightmare in New York City, and this governmental intervention in the private sector is a step toward creating the same situation here. LEA opposed this bill, now law, which passed on final votes of 69-56 in the House, and 38-25 in the Senate. Author: CLARK

**5. Handgun Hunting (SF 682):** This bill permits hunting with handguns under certain conditions regulated by the DNR. This is a step toward reaffirming the right to keep and bear arms. Gun control advocates demonstrated this by trying to attach crippling amendments and vehemently opposing the final bill. LEA supported this bill, now law, which passed on final votes of 105-16 in the House, and 48-8 in the Senate. Authors: BATTAGLIA, CHMIELEWSKI

**6. Public Employees (SF 2085):** This bill creates a number of occupationally defined bargaining units for public employees. It effectively brings even non-union members under the representation of each unit's union. Similar legislation "drafting" public workers on all government levels is the only thing keeping the union-represented portion of the nation's work force from declining even further. Except for "essential" employees like firemen and policemen, the bill expands the right of public employees, including teachers, to strike. Perhaps the idea that public employees have no right to strike died with Calvin Coolidge, but it seems logical that if a public service is important enough to compel taxpayers' support, then it is important enough to compel public employees to do their jobs. It is wishful thinking to believe that "essential" public employees won't strike after expanding the rights of others to do so. LEA opposed this bill, now law, which passed on final votes of 86-46 in the House, and 54-0 in the Senate. Authors: SIMONEAU, COLEMAN

**7. Building-Bonding (HF 2470):** The final version of this bill included both bonding and non-bonding expenditures aggregating \$234 million for the acquisition and betterment of public land, buildings, and other property. It was a typical "Christmas tree" bill which mixed a few good and necessary items with a lot of vote-attracting pork barrel projects and a few totally unjustifiable ones such as almost \$10 million for the Hubert H. Humphrey Institute. LEA opposes such bills in principle and opposed this one in particular. Fortunately, enough legislators gagged on this "legislative stew" so that it failed to get the two-thirds majority required for bonding bills of this type in the House (73-60). There was no Senate vote on the bill's final version. Author: VOSS

**8. Worker's Compensation (HF 1837):** The key provision of this bill, a Senate amendment, would have prohibited the scheduling of a worker's compensation rate change hearing until insurance carriers supply detailed information on the costs and reserves applying to their Minnesota operations. Besides wasting all the time and money already spent on the current hearing, and substituting a policy of confrontation with the insurance companies for one of consultation between them and the Insurance Commissioner, the bill would not address the real causes of high worker's compensation rates — overly generous benefits, questionable claims, lax investigative pro-

— Please send me \_\_\_\_\_ copies of this 1980 Annual Report. 50¢ each, 12/\$5.00, or 100/\$35.00. Quantity rates available.

— Please send me \_\_\_\_\_ copies of both the 1979 and 1980 Reports (complete seventy-first session). \$1.00 pair, 12 pair/\$10.00, or 100 pair/\$70.00. Quantity rates available.

— Please send me \_\_\_\_\_ copies of the LEA Senate District Report which shows voting record of district's Senator and two Representatives. 100/\$20.00, 500/\$30.00, 1,000/\$50.00. Quantity rates available. Please specify 1979 or 1980 and requested district.

— A contribution of \_\_\_\_\_ is enclosed.

Please make all checks payable to LEA. Use return envelope or this coupon.

SEND TO: LEA  
2525 County Road I  
Minneapolis, MN 55432

## KEY NOTES — Continued

cedures, and excessive labor union power. LEA opposed this bill, and is using the House vote (80-51) to override the Governor's veto, which needed 90+ votes to succeed; and the final Senate vote 46-16. Authors: L. CARLSON, LUTHER

**9. Initiative and Referendum (HF 2304):** In proposing an amendment to the Minnesota Constitution providing for the citizens to repeal or propose and enact laws, the legislators added restrictions and requirements such as filing fees, time limits, a sunset provision on the initiative-referendum power, and allowing the legislature to act on the proposed legislation and, if deemed necessary, to put its own proposal on the ballot in competition with the original petition. These restraints are apparently unnecessary when legislators, bureaucrats, or judges act on laws. In spite of all this, LEA believes that acceptance of this amendment in November will be worthwhile if voters take advantage of this power in the same way as non-metro counties have used the opportunity to hold referendums on the state building code. The proposed amendment passed on final votes of 86-47 in the House, and 46-13 in the Senate. Authors: KEMPE, McCUTCHEON

**10. Small Business Finance Agency (HF 2045):** This legislation creates a small business finance agency with authority to issue \$30 million in tax-exempt bonds in order to make loans for small business projects such as pollution control facilities. After confronting businesses with high corporate and personal income tax rates, excessive worker's compensation and unemployment compensation rates, and extreme bureaucratic regulations, the state returns a small portion as "aid" or "tax relief". With the payroll costs of 150 workers in Texas, for comparison, being more than one million dollars less than for the same work force in Minnesota, it is easy to see why this state is losing existing and not attracting new business. The only real growth in Minnesota has been in the wild expansion of new government jobs. LEA opposes this bill, now law, which passed on final votes of 105-15 in the House, and 42-5 in the Senate. Authors: REDING, LAUFENBURGER

**11. 1980 Omnibus Tax Bill (HF 1121):** This huge tax bill (over 300 pages) covers nearly all aspects of state government. Proponents praised provisions of the bill which will attempt to cushion scheduled property tax increases due to the recent judicial repeal of "limited market value". However, overall it is another "Christmas tree" type bill, adorned with all kinds of unrelated packages and ornaments; a result of the legislature's annual session's-end spending madness. One of the objectionable provisions is the increasing of levy limitations from 6 to 8 percent for local governments other than the state's three largest cities. Another is increasing by \$180 million the obligation to the State Retirement System, \$140 million of which go to Minneapolis and St. Paul for pension aid. Pension costs are a growing financial threat to the budgets of local governments and the state and are a result of the legislature authorizing increased pension benefits without thinking of the financial consequences. LEA opposed this bill, now law, which passed the House 103-29, and the Senate 57-0. Authors: H. SIEBEN, STOKOWSKI

**12. Hazardous Waste (HF 2023):** This bill, now law, created a state board for planning, siting, permitting, and regulating hazardous waste facilities, with power to override local authorities. As in other important areas such as energy and education, the state and Federal government's response to serious problems is to create all-powerful agencies that only generate more bureaucracy, taxes, spending, and problems, while not solving the problem they were originally created to address. LEA opposed this bill which passed on final votes of

99-27 in the House, and 56-7 in the Senate. Authors: CASSERLY, MERRIAM

**13. Trunk Highway Bonding (HF 2289):** This bill would amend the Minnesota Constitution to remove restrictions on the interest rate, bonding limit (previously \$150 million), and number of trunk highway bonds. LEA opposes this bill, feeling that a legislature which repeatedly defeats or stalls bills and resolutions to limit state and Federal spending requires stringent restrictions on its own spending powers, powers the voters will have a chance to address in November. Passed on third reading votes of 101-21 in the House, and 42-3 in the Senate. Authors: OSTHOFF, SCHMITZ

**14. Nuclear Power (HF 378, SF 657):** This bill would have prevented the building of a new or expansion of an existing nuclear fission thermal power plant until the Minnesota Energy Agency issued a certificate of economic and technological feasibility. This was a blatant attempt to stall what can be America's safest, most efficient and economical answer to the energy crisis. Neither state nor Federal energy agencies, with their wasteful spending policies, have demonstrated economic and technological feasibility. They certainly have not produced any energy. LEA opposed this bill which on third reading votes passed the Senate 34-27, but was defeated in the House 58-73. Authors: OTIS, HUMPHREY

**15. Retail Credit (SF 285):** This bill, now law, increases from 12 to 16 percent the maximum interest rates on retail charge accounts. Because business owners have had to borrow at a higher rate in order to extend credit, cash customers have been made to subsidize credit customers through higher product prices. This legislation is a tough and realistic approach to economic problems like inflation that are largely caused by government practices such as excessive spending which weaken the value of our currency. LEA supports this bill which passed the House 76-55, and the Senate 44-16 on third reading votes. Authors: FRIEDRICH, LAUFENBURGER

**16. Regional Development (SF 407):** This bill, now law, allows counties and municipalities representing the population served by a Regional Development Commission (RDC) to petition the state planning officer for termination of that RDC. The members of that RDC, after conducting a public hearing, may then recommend to the state planning officer that they disband. LEA supports this opportunity to eliminate wasteful and unnecessary levels of government. The bill passed the House 128-1 on a third reading vote, and the Senate on a final vote 37-23. Authors: CASSERLY, PETERSON

### *Proposed Constitutional Amendments on November Ballot*

● **Reapportionment (S.F. 129):** Would transfer reapportionment duties from the state legislature to a bipartisan commission. LEA opposes this concept and used the bill and votes in its 1979 Report.

● **Campaign financing:** Attached to the Initiative-Referendum bill but appearing separately on the November ballot is this proposed amendment to the Minnesota Constitution adding campaign spending limits for candidates accepting public funding. LEA believes this type of "cosmetic reform" is incumbent protection and leads to bureaucratic supervision and harassment and censorship upon our most fundamental right.

● **Trunk Highway Building:** (see key vote number 13).

● **Initiative and Referendum:** (see key vote number 9).

# SENATE

	1.	2.	3.	4.	5.	6.	7.	8.	9.	10.	11.	12.	13.	14.	15.	16.	%+
d ANDERSON, J. (North Branch 19)	Y	Y	Y	Y	—	Y		Y	Y*	Y	—	Y	Y	Y	Y*	N	15
r ASHBACH, R. (St. Paul 48)	Y	Y	Y	N*	Y*	Y		—	Y*	—	Y	Y	—	N*	Y*	Y*	50
r BANG, O. (Edina 39)	Y	Y	—	N*	Y*	Y		N*	Y*	Y	Y	Y	Y	N*	Y*	N	4
r BARRETTE, E. (St. Paul 66)	Y	N*	N*	N*	Y*	Y		Y	Y*	Y	Y	Y	Y	Y	N	N	30
d BENEDICT, R. (Bloomington 38)	Y	—	Y	N*	Y*	—		Y	—	Y	—	Y	—	Y	N	Y*	30
r BERNHAGEN, J. (Hutchinson 22)	—	N*	Y	N*	Y*	Y		Y	Y*	Y	Y	Y	Y	N*	Y*	Y*	50
r BRATAAS, N. (Rochester 33)	Y	Y	Y	N*	Y*	Y		N*	N	Y	Y	Y	Y	N*	Y*	N	33
d CHMIELEWSKI, F. (Sturgeon Lake 14)	N*	—	Y	N*	Y*	—		Y	—	Y	—	Y	Y	—	Y*	Y*	50
d COLEMAN, N. (St. Paul 65)	Y	Y	Y	Y	—	Y		Y	Y*	—	Y	—	—	Y	Y*	—	20
d DAVIES, J. (Mpls. 60)	Y	Y	N*	Y	N	—		Y	N	N*	Y	Y	N*	Y	Y*	N	29
d DIETERICH, N. (St. Paul 62)	Y	N*	N*	Y	N	Y		Y	N	Y	Y	N*	—	Y	N	N	29
r DUNN, R. (Princeton 18)	Y	N*	Y	Y	N	Y		Y	Y*	—	Y	Y	Y	N*	Y*	Y*	36
r ENGLER, S. (Randolph 25)	Y	N*	Y	N*	Y*	Y		N*	Y*	Y	Y	Y	Y	N*	Y*	Y*	53
r FREDERICK, M. (West Concord 32)	Y	—	Y	N*	Y*	Y		N*	—	Y	Y	Y	Y	N*	Y*	N	39
d GEARTY, E. (Mpls. 54)	Y	Y	Y	Y	Y*	Y		Y	N	Y	Y	Y	Y	Y	N	Y*	13
d GUNDERSON, J. (Mabel 35)	Y	Y	Y	Y	Y*	Y		Y	Y*	—	Y	Y	—	N*	Y*	N	31
d HANSON, M. (Hallock 1)	Y	Y	Y	Y	Y*	Y		Y	Y*	—	Y	Y	Y	—	Y*	Y*	31
d HUGHES, J. (Maplewood 50)	Y	Y	Y	Y	Y*	Y		Y	Y*	Y	Y	Y	Y	Y	N	N	13
d HUMPHREY, H. (New Hope 44)	Y	Y	Y	Y	Y*	Y		Y	Y*	Y	Y	Y	Y	Y	N	N	13
r JENSEN, C. (Sleepy Eye 28)	Y	—	Y	N*	Y*	—		N*	—	Y	—	Y	—	N*	Y*	Y*	60
d JOHNSON, D. (Cook 6)	Y	Y	N*	Y	Y*	Y		Y	N	Y	Y	Y	Y	Y	N	Y*	20
r KEEFE, J. (Hopkins 40)	Y	N*	Y	N*	Y*	—		N*	Y*	—	Y	N*	Y	N*	—	N	58
d KEEFE, S. (Mpls. 59)	—	Y	—	Y	—	Y		Y	N	N*	Y	—	Y	Y	N	—	10
r KIRCHNER, W. (Richfield 37)	Y	Y	Y	N*	—	—		Y	Y*	—	—	Y	—	N*	—	N	—
d KLEINBAUM, J. (St. Cloud 17)	Y	Y	Y	Y	Y*	Y		Y	N	Y	—	Y	Y	Y	Y*	Y*	21
r KNAAK, D. (White Bear Lake 49)	Y	Y	N*	N*	Y*	—		N*	Y*	Y	Y	Y	Y	N*	Y*	Y*	57
d KNOLL, F. (Mpls. 61)	Y	Y	Y	Y	N	Y		Y	Y*	N*	Y	Y	Y	Y	—	N	14
r KNUTSON, H. (Burnsville 53)	N*	N*	Y	N*	Y*	—		N*	Y*	Y	Y	Y	Y	N*	Y*	N	57
d LAUFENBURGER, R. (Lewiston 34)	Y	Y	—	—	Y*	Y		Y	Y*	Y	Y	Y	Y	N*	Y*	N	31
d LESSARD, R. (Int'l Falls 3)	Y	Y	Y	Y	Y*	Y		Y	N	Y	Y	Y	—	N*	Y*	Y*	29
d LUTHER, W. (Brooklyn Ctr. 45)	Y	Y	N*	Y	N	Y		Y	N	N*	Y	Y	Y	Y	N	N	13
d MCCUTCHEON, W. (St. Paul 67)	Y	Y	Y	—	—	Y		—	Y*	—	Y	Y	—	—	—	—	—
d MENNING, M. (Edgerton 26)	Y	Y	Y	N*	Y*	Y		Y	Y*	Y	Y	Y	Y	Y	Y*	Y*	33
d MERRIAM, G. (Coon Rapids 47)	Y	Y	N*	Y	Y*	Y		Y	N	N*	Y	Y	Y	Y	N	N	2
d MOE, R. (Ada 2)	Y	Y	Y	Y	—	Y		Y	Y*	—	Y	Y	—	Y	Y*	Y*	25
d NELSON, T. (Austin 31)	—	Y	Y	Y	Y*	Y		Y	Y*	—	Y	Y	—	Y	Y*	Y*	33
d NICHOLS, J. (Lake Benton 20)	N*	Y	Y	Y	Y*	Y		Y	Y*	—	Y	Y	—	N*	Y*	Y*	46
r OGDahl, H. (Mpls. 58)	Y	—	Y	N*	—	Y		N*	Y*	Y	Y	Y	Y	N*	Y*	N	39
d OLHOFT, W. (Herman 11)	Y	Y	Y	N*	Y*	Y		Y	—	Y	—	Y	N*	Y	—	Y*	33
d OLSON, H. (St. James 27)	Y	Y	Y	N*	Y*	Y		Y	Y*	Y	Y	Y	Y	N*	Y*	Y*	40
r OMANN, B. (St. Joseph 16)	Y	N*	Y	N*	Y*	Y		N*	Y*	Y	Y	Y	Y	N*	—	Y*	50
d PENNY, T. (New Richland 30)	Y	Y	Y	Y	Y*	Y		Y	Y*	Y	Y	N*	—	Y	Y*	Y*	36
d PERPICH, G. (Chisholm 5)	Y	Y	N*	Y	Y*	—		Y	Y*	Y	—	Y	Y	Y	N	Y*	31
d PETERSON, C. (Detroit Lakes 10)	N*	Y	N*	Y	Y*	Y		—	Y*	—	Y	Y	—	—	Y*	Y*	55
r PILLSBURY, G. (Wayzata 42)	Y	—	Y	N*	—	—		N*	—	Y	—	Y	Y	N*	Y*	Y*	50
d PURFEERST, C. (Faribault 24)	Y	Y	Y	Y	Y*	Y		Y	Y*	Y	Y	Y	Y	N*	Y*	N	27
r RENNEKE, E. (LeSueur 23)	N*	N*	Y	N*	Y*	—		Y	Y*	Y	Y	N*	Y	N*	Y*	Y*	64
r RUED, D. (Aitkin 13)	N*	N*	Y	N*	Y*	Y		Y	Y*	Y	Y	N*	Y	N*	Y*	Y*	60
d SCHAAF, D. (Fridley 46)	Y	Y	N*	—	—	Y		—	—	—	Y	Y	—	—	Y*	—	—
d SCHMITZ, R. (Jordan 36)	Y	Y	Y	Y	Y*	Y		—	Y*	Y	Y	N*	Y	Y	Y*	—	31
d SETZEPFANDT, A. (Bird Island 21)	N*	Y	Y	Y	Y*	Y		Y	Y*	Y	Y	Y	Y	N*	Y*	Y*	40
r SIELOFF, R. (St. Paul 63)	Y	N*	N*	N*	Y*	Y		N*	Y*	—	Y	Y	Y	N*	Y*	Y*	64
d SIKORSKI, G. (Stillwater 51)	Y	Y	N*	Y	Y*	Y		Y	Y*	Y	Y	Y	Y	Y	N	Y*	27
r SILLERS, D. (Moorhead 9)	—	—	—	—	—	—		N*	—	—	—	—	—	—	Y*	—	—
d SOLON, S. (Duluth 7)	—	Y	Y	Y	Y*	Y		Y	Y*	Y	Y	Y	Y	Y	Y*	Y*	29
d SPEAR, A. (Mpls. 57)	Y	Y	Y	Y	N	Y		Y	N	—	Y	Y	—	Y	N	N	0
d STAPLES, E. (Plymouth 43)	Y	Y	Y	N*	Y*	Y		Y	Y*	—	Y	Y	—	Y	Y*	N	31
d STERN, I. (St. Louis Park 41)	Y	Y	Y	Y	Y*	Y		Y	N	—	Y	—	Y	Y	Y*	Y*	23
d STOKOWSKI, A. (Mpls. 55)	Y	Y	Y	Y	Y*	Y		Y	Y*	Y	Y	Y	Y	Y	N	Y*	20
d STRAND, R. (Cyrus 15)	Y	Y	Y	Y	Y*	Y		Y	Y*	Y	Y	Y	Y	Y	Y*	Y*	27
d STUMPF, P. (St. Paul 64)	Y	Y	N*	Y	N	Y		Y	Y*	Y	Y	Y	N*	Y	N	N	20
d TENNESSEN, R. (Mpls. 56)	Y	Y	Y	Y	N	Y		N*	N	—	Y	Y	—	Y	Y*	N	15
r UELAND, A. (North Mankato 29)	Y	N*	Y	N*	Y*	Y		N*	Y*	Y	Y	Y	Y	N*	Y*	Y*	53
r ULLAND, J. (Duluth 8)	Y	Y	Y	Y	—	—		Y	Y*	Y	Y	Y	Y	Y	Y*	Y*	23
d VEGA, C. (South St. Paul 52)	Y	Y	N*	Y	Y*	Y		Y	Y*	Y	Y	N*	—	Y	—	Y*	30
d WEGENER, M. (Bertha 12)	Y	Y	—	Y	Y*	Y		Y	Y*	Y	Y	Y	—	N*	Y*	—	33
d WILLET, G. (Park Rapids 4)	Y	Y	Y	Y	Y*	Y		Y	Y*	—	Y	Y	—	Y	N	Y*	23

NO SENATE VOTE