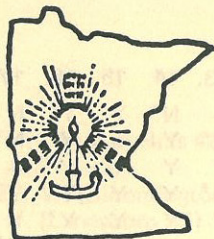
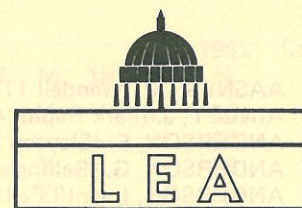


# 1982 REPORT on the MINNESOTA LEGISLATURE



by the  
LEGISLATIVE EVALUATION ASSEMBLY  
of MINNESOTA, INC.  
for an  
INFORMED CITIZENRY  
1982



The Legislative Evaluation Assembly of Minnesota, Incorporated (LEA), is a non-profit, non-partisan corporation established to keep the citizens of Minnesota informed of both important legislation and the voting performance of each Representative and Senator in the Minnesota State Legislature.

LEA bases its evaluation on these principles: the American form of government, social pluralism, and constitutionalism; strictly limited government spending, taxation, and areas of activity; national sovereignty and strength; legal and moral order with justice; private property, a free market economy, and individual initiative; freedom and dignity of the individual.

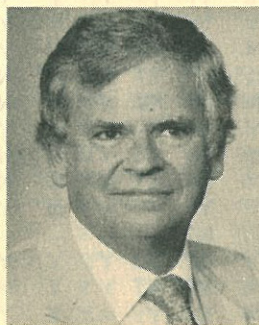
LEA conducts its analysis and all its other activities solely with voluntary efforts and has no income other than from donations and the sale of its reports. Your donations and orders are needed to make it possible for LEA to continue its work. LEA encourages the usage of the material in this Report, in whole or in part, by any group or individual.

*Whether or not you agree with LEA's stand on all the legislation rated herein, this report will be useful in questioning your senator and representative. If they have represented your wishes on these issues, thank them. But if you object to their vote on any of these bills, we suggest that you confront them with your views. Your expressed opinion will have an effect!*

Bob Knudson  
LEA Chairman



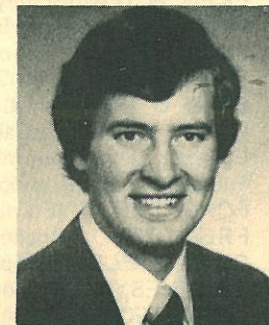
MYRON NYSETHER  
TOP REPRESENTATIVE



GILBERT ESAU  
TOP REPRESENTATIVE



HOWARD KNUTSON  
TOP SENATOR



RANDY KAMRATH  
TOP SENATOR

## DOUBLE TIE FOR TOP RATINGS

LEA is pleased to present its evaluation of the 201 Legislators during the 1982 session. Representatives Gilbert Esau of Mountain Lake and Myron Nysether of Roseau achieved perfect voting scores, while Senators Randy Kamrath of Canby and Howard Knutson of Burnsville shared the top rating in the Senate. Other Representatives meriting honorable mention are:

Paul Aasness (Wendell)  
John Ainley (Park Rapids)  
Gaylin Den Ouden (Prinsburg)  
Wendell Erickson (Hills)  
Dave Fjoslien (Brandon)  
Bob Haukoos (Albert Lea)

Dave Jennings (Truman)  
Adolph Kvam (Litchfield)  
Robert Lemen (Grand Rapids)  
Cal Ludeman (Tracy)  
K.J. McDonald (Watertown)  
Bruce Nelsen (Staples)

Joe Niehaus (Sauk Centre)  
Tom Rees (Elko)  
Gary Schafer (Gibbon)  
Glen Sherwood (Pine River)  
Tony Stadum (Ada)  
Tom Stowell (Lewiston)

Steve Sviggum (Kenyon)  
Don Valento (Little Canada)  
Ray Welker (Montevideo)  
Richard Wigley (Lake Crystal)

## A TIME FOR DECISION

The Legislature's performance this last biennium was essentially a time-serving operation which avoided any decisive action on the fundamental problems plaguing our State. In a series of "one-time" fixes in a budget balancing act extending over two regular sessions and four special sessions, the Legislature — made budget reductions of \$529 million; shifted payments of \$630.9 million into the next biennium; authorized borrowing over \$1.36 billion; and increased taxes by over \$1.1 billion. None of these actions promise an end to the State's recurrent financial problems; in fact, they will make a bad situation worse, as Minnesotans were already paying the ninth highest state and local taxes in the nation. Moreover, excessive deference to the power of labor unions totally blocked consideration of legislation limiting public employee strikes and strikes that interfere with the intrastate movement of farm commodities.

However, reapportionment of the Legislature and the subsequent retirements and running for other offices by incumbents offer a heaven-sent opportunity to break the moderate-liberal dominance of the State with its usual formula of government centralization and redistribution schemes. Minnesotans should seize the chance to elect a conservative majority which can emulate the bold changes taking place on the national level.





# KEY VOTES

Y = Yes                    d = Democratic-Farmer Labor  
 N = No                    r = Independent-Republican  
 - means excused, absent, or not voting  
 \* denotes vote favored by LEA  
 Career % means percentage of legislator's career votes  
 that were correct according to LEA  
 Legislators identified by 1981 districts. Those absent  
 for more than 5 votes are not rated.

**1. Omnibus Tax and Budget Bill (HF 2, Special Session 3):** Among other things, this bill added a 7% surcharge to the income tax; imposed a unitary taxation system on corporations; included cigarettes and vending machine sales in the sales tax; and removed the \$360 million limit on short-term borrowing, allowing the State to borrow up to the maximum current cash flow requirement. This bill illustrates perfectly the Legislature's unmatched talent for doing the wrong thing, for it increases the unreasonably high income tax, hurts the already bleak business climate, and makes borrowing an integral component of Minnesota's budgeting process. LEA opposes this bill, which passed on final votes of 69-59 in the House, and 50-17 in the Senate, and became law without the Governor's signature. Authors: SARNA, HUMPHREY

**2. Tax and Budget Bill (HF 2190):** This bill cut \$60 million from the budget, shifted \$102.9 million in payments to the next biennium, and raised \$69 million in additional taxes on candy, soft drinks, cable television services, and liquor by the drink. It is still another "Band-Aid" remedy which provides no long-range solution to Minnesota's basic economic maladies. If anything, it will make future problems far more serious and less amenable to "one-time" fixes. LEA opposes this bill, now law, which passed on final votes of 68-57 in the House, and 47-14 in the Senate. Author: L. CARLSON

**3. Workers' Compensation (HF 1220):** This bill would have made modest changes in the workers' compensation structure and unemployment eligibility standards and created a State-run insurance fund to provide workers' compensation for State employees. This legislation in no way addresses the serious problems in these areas, which make Minnesota uncompetitive with other states in attracting and holding businesses, while it introduces a socialistic element that would only worsen the whole situation. LEA opposes this bill, which passed on final votes of 69-53 in the House, and 40-21 in the Senate, but was rightly vetoed by the Governor. Authors: SIMONEAU, C. PETERSON

**4. Environmental Super Fund (HF 1176):** This bill would have established a \$4.6 million "super fund" to clean up hazardous waste spills and made all companies involved in the manufacture, sale, and disposal of a hazardous waste retroactively and strictly liable for damages caused by the waste, even if they had acted in full compliance with existing laws and scientific knowledge. In fact, it would have eliminated the need to first establish negligence! This ex post facto legislation demonstrates the tendency of many in our State to blame private business for all of our problems and to punish it even more with additional regulation and taxation. LEA opposes this bill, and is using the House vote of 82-45 to override the Governor's veto, an attempt that fortunately failed, and the final Senate vote of 45-17. Authors: LONG, MERRIAM

**5. "Wrongful" Life, Birth (HF 1532):** This bill prohibits children from suing parents and parents from suing doctors for allowing the birth rather than the abortion of the child. This bill would prevent absurd lawsuits that would encourage medical personnel to advise abortions in order to avoid crippling financial liability, but would still permit court action for intentional or negligent malpractice. LEA supports this bill, now law, which passed on final votes of 100-20 in the House, and 46-15 in the Senate. Authors: O'CONNOR, OLHOFT

**6. Drug Paraphernalia (SF 1758):** This bill prescribes penalties for the manufacture, sale, and possession of drug paraphernalia and prohibits such devices. Certain court decisions have finally given the Legislature the courage to crack down on items that pander to and stimulate the trend toward illicit drug use, especially by the young. LEA supports this bill, now law, which passed on final votes of 116-5 in the House, and 54-2 in the Senate. Authors: KELLY, M. HANSON

**7. Agricultural Land Preservation (HF 1919):** This bill sets State policy on agricultural land preservation and conservation. A more appropriate name would be Agricultural Land Control. No reference in the bill is made to land owners, they are now called land occupiers. The State Soil and Water Conservation Board is given a long list of powers and duties. These include: to assist in the inventory and classification of the types of soil throughout the State; to subdivide and consolidate districts (without a hearing); and to ensure compliance with statewide programs established by the State Board. LEA opposes this bill, now law, which grants more governmental land control. It passed on final votes of 105-11 in the House, and 60-0 in the Senate. Authors: KALIS, WEGENER

**8. Rehabilitation Loans (HF 1365):** This bill authorizes cities to issue revenue bonds to finance rehabilitation loans and interest reduction programs for small and medium sized commercial buildings. Although the bill states that these programs are necessary to preserve the "quality of life" of residents unable to obtain private market financing, in actuality excessive government involvement and spending in areas such as these hurt the economy and cripple the private sector, which would provide a much better and less costly solution. LEA opposes this bill, now law, which passed on final votes of 87-34 in the House, and 39-0 in the Senate. Authors: POGEMILLER, PEHLER

**9. Local Government Council (SF 1588):** A permanent nineteen member advisory council to (supposedly) improve communication and cooperation between State and local government would have been created by this bill. There is no need for still another government agency whose supporting staff and appropriations would add to an already oversized State government, and particularly when its duties should be performed by existing elected legislative and administrative officials. LEA opposes this bill, which passed on final votes of 99-26 in the House, and 38-11 in the Senate, but was deservedly vetoed by the Governor. Authors: VOSS, WEGENER

**10. Mosquito "Sting" (HF 1542):** This bill changes the present voluntary metropolitan mosquito control district to a mandatory one including almost the entire seven county metro area. It allows the mosquito control commission to double the property tax from .3 mills to .6 mills to raise an extra \$3 million and exempts the tax levy from current levy limits. It increases the power of Metro Government, an unnecessary and unconstitutional governmental level, and thereby raises it closer to the status of an appointed super agency that could levy its own taxes. LEA opposes this bill, now law, which passed on final votes of 92-34 in the House, and 34-25 in the Senate. Authors: SKOGLUND, PETTY

— Please send me \_\_\_\_\_ copies of this 1982 Annual Report. 50¢ each, 12/\$5.00, or 100/\$33.50. Quantity rates available.  
 — Please send me \_\_\_\_\_ copies of both the 1981 and 1982 Reports (complete seventy-second session). \$1.00 pair, 12 pair/\$10.00, or 100 pair/\$67.00. Quantity rates available.  
 — Please send me \_\_\_\_\_ copies of the LEA Special Report which shows voting record of from one to three chosen legislators. 100/\$27.00, 500/\$40.00, 1,000/\$65.00. Quantity rates available. Please specify 1981 or 1982 and desired legislators.  
 — I am interested in working with LEA.  
 — A contribution of \_\_\_\_\_ is enclosed. (An order or contribution of \$5.00 or more will place you on LEA's mailing list.)  
 Please make all checks payable to LEA. Use return envelope or this coupon.  
**SEND TO: LEA** (612) 786-3944  
 2525 County Road I (612) 452-3906  
 Minneapolis, MN 55432

# SENATE

|                                      | 1. | 2. | 3. | 4. | 5. | 6. | 7. | 8. | 9. | 10. | 11. | 12. | 13. | 14. | 15. | 16. | 1982<br>% | Career<br>% |    |
|--------------------------------------|----|----|----|----|----|----|----|----|----|-----|-----|-----|-----|-----|-----|-----|-----------|-------------|----|
| ASHBACH, R. (Arden Hills 48)         | N* | Y  | N* | Y  | -  | Y* | -  | Y  | Y  | N*  | N*  | N*  | Y   | Y   | Y   | Y*  | 50        | 42          |    |
| BANG, O. (Edina 39)                  | N* | N* | N* | N* | N  | Y* | Y  | -  | Y  | -   | N*  | N*  | Y   | -   | -   | -   | 64        | 44          |    |
| r BELANGER, W. (Bloomington 38)      | N* | N* | N* | N* | Y* | Y* | Y  | Y  | Y  | Y   | N*  | N*  | Y   | Y   | Y   | Y*  | 56        | 51          |    |
| r BENSON, D. (Lanesboro 35)          | N* | N* | N* | Y  | Y* | Y* | Y  | Y  | -  | Y   | N*  | N*  | Y   | Y   | Y   | Y*  | 53        | 56          |    |
| r BERG, C. (Chokio 15)               | Y  | Y  | N* | N* | Y* | Y* | Y  | Y  | Y  | N*  | N*  | N*  | Y   | N*  | Y   | Y*  | 56        | 60          |    |
| d BERGLIN, L. (Mpls. 59)             | Y  | Y  | Y  | Y  | N  | Y* | Y  | Y  | N* | Y   | Y   | Y   | Y   | N*  | -   | Y*  | 27        | 8           |    |
| r BERNHAGEN, J. (Hutchinson 22)      | N* | Y  | N* | N* | Y* | Y* | Y  | -  | Y  | N*  | N*  | N*  | Y   | N*  | -   | Y*  | 71        | 51          |    |
| d BERTRAM, J. (Paynesville 16)       | Y  | N* | Y  | Y  | Y* | Y* | Y  | Y  | Y  | N*  | N*  | N*  | Y   | Y   | Y   | Y*  | 44        | 44          |    |
| r BRATAAS, N. (Rochester 33)         | Y  | -  | -  | Y  | N  | -  | Y  | Y  | Y  | N*  | N*  | N*  | Y   | N*  | -   | Y*  | 42        | 31          |    |
| d CHMIELEWSKI, F. (Sturgeon Lake 14) | Y  | -  | Y  | Y  | Y* | Y* | Y  | Y  | Y  | Y   | N*  | Y   | Y   | N*  | Y   | Y*  | 31        | 37          |    |
| d DAHL, G. (White Bear Lake 49)      | Y  | Y  | Y  | Y  | Y* | Y* | Y  | Y  | Y  | Y   | Y   | Y   | Y   | N*  | Y   | Y*  | 25        | 21          |    |
| d DAVIES, J. (Mpls. 60)              | Y  | Y  | Y  | Y  | N  | -  | Y  | Y  | -  | Y   | Y   | Y   | -   | N*  | Y   | Y*  | 15        | 16          |    |
| d DAVIS, C. (Princeton 18)           | Y  | Y  | Y  | Y  | Y* | Y* | Y  | Y  | Y  | N*  | N*  | Y   | Y   | Y   | Y   | Y*  | 31        | 35          |    |
| d DICKLICH, R. (Hibbing 5)           | Y  | Y  | Y  | Y  | N  | Y* | Y  | Y  | -  | Y   | Y   | Y   | Y   | Y   | Y   | Y*  | 13        | 18          |    |
| d DIETERICH, N. (St. Paul 62)        | Y  | Y  | Y  | Y  | -  | Y* | Y  | -  | N* | Y   | Y   | N*  | -   | N*  | -   | Y*  | 42        | 19          |    |
| r ENGLER, S. (Randolph 25)           | Y  | Y  | N* | Y  | Y* | Y* | Y  | -  | -  | N*  | N*  | Y   | Y   | N*  | -   | Y*  | 54        | 49          |    |
| d FRANK, D. (Spring Lake Park 46)    | Y  | Y  | Y  | Y  | Y* | Y* | Y  | Y  | Y  | Y   | Y   | Y   | Y   | Y   | -   | Y*  | 20        | 21          |    |
| r FREDERICK, M. (West Concord 32)    | Y  | Y  | N* | N* | -  | -  | Y  | -  | Y  | -   | N*  | N*  | Y   | N*  | -   | Y*  | 55        | 45          |    |
| r FREDERICKSON, D. (Morgan 28)       | N* | Y  | N* | N* | Y* | Y* | Y  | Y  | Y  | Y   | Y   | N*  | Y   | Y   | Y   | Y*  | 44        | 42          |    |
| d HANSON, M. (Hallock 1)             | Y  | Y  | Y  | Y  | Y* | Y* | -  | -  | Y  | Y   | Y   | -   | Y   | Y   | -   | -   | 18        | 18          |    |
| d HUGHES, J. (Maplewood 50)          | Y  | Y  | Y  | Y  | Y* | Y* | Y  | -  | Y  | -   | Y   | Y   | Y   | Y   | -   | -   | 17        | 11          |    |
| d HUMPHREY, H. (New Hope 44)         | Y  | Y  | Y  | -  | -  | Y  | Y  | Y  | -  | Y   | Y   | -   | Y   | -   | Y   | -   | -         | 7           | 7  |
| d JOHNSON, D. (Cook 6)               | Y  | Y  | Y  | Y  | Y* | Y* | Y  | -  | Y  | Y   | Y   | Y   | Y   | N*  | -   | Y*  | 29        | 13          |    |
| r KAMRATH, R. (Canby 20)             | N* | N* | N* | N* | Y* | Y* | Y  | Y  | N* | N*  | N*  | N*  | Y   | N*  | Y   | Y*  | 75        | 73          |    |
| r KEEFE, J. (Hopkins 40)             | N* | -  | -  | -  | -  | -  | -  | -  | -  | -   | -   | -   | -   | -   | -   | -   | -         | 36          | 36 |
| d KNOLL, F. (Mpls. 61)               | Y  | Y  | Y  | Y  | Y* | N  | Y  | -  | Y  | Y   | Y   | Y   | Y   | Y   | Y   | Y*  | 13        | 12          |    |
| r KNOTSON, H. (Burnsville 53)        | N* | N* | N* | N* | Y* | Y* | Y  | Y  | Y  | N*  | N*  | N*  | N*  | N*  | Y   | Y*  | 75        | 50          |    |
| d KROENING, C. (Mpls. 54)            | Y  | -  | -  | -  | Y* | Y* | Y  | Y  | N* | N*  | N*  | N*  | Y   | Y   | Y   | Y*  | 46        | 23          |    |
| KRONEBUSCH, P. (Rollingstone 34)     | N* | Y  | N* | N* | Y* | Y* | Y  | -  | Y  | N*  | N*  | N*  | Y   | Y   | Y   | Y*  | 53        | 49          |    |
| LANGSETH, K. (Glyndon 9)             | Y  | Y  | Y  | Y  | Y* | Y* | Y  | -  | N* | N*  | N*  | N*  | -   | Y   | -   | Y*  | 54        | 38          |    |
| LANTRY, M. (St. Paul 67)             | Y  | Y  | Y  | Y  | Y* | Y* | Y  | Y  | Y  | Y   | Y   | Y   | Y   | Y   | Y   | Y*  | 19        | 18          |    |
| d LESSARD, R. (Int'l. Falls 3)       | Y  | -  | -  | Y  | Y* | Y* | Y  | Y  | -  | N*  | N*  | N*  | Y   | Y   | -   | Y*  | 50        | 33          |    |
| r LINDGREN, S. (Richfield 37)        | N* | N* | N* | Y  | Y* | Y* | Y  | -  | -  | Y   | N*  | N*  | Y   | N*  | -   | Y*  | 69        | 57          |    |
| d LUTHER, W. (Brooklyn Center 45)    | Y  | Y  | Y  | Y  | Y* | Y* | Y  | -  | N* | Y   | Y   | Y   | Y   | N*  | -   | Y*  | 36        | 16          |    |
| d MENNING, M. (Edgerton 26)          | Y  | Y  | Y  | Y  | Y* | Y* | Y  | -  | Y  | -   | N*  | N*  | Y   | N*  | -   | Y*  | 46        | 31          |    |
| d MERRIAM, G. (Coon Rapids 47)       | Y  | Y  | Y  | Y  | Y* | Y* | Y  | -  | -  | Y   | Y   | Y   | Y   | N*  | -   | Y*  | 31        | 18          |    |
| d MOE, D. (St. Paul 65)              | Y  | Y  | Y  | Y  | N  | N  | Y  | Y  | Y  | Y   | Y   | Y   | Y   | N*  | -   | Y*  | 13        | 9           |    |
| d MOE, R. (Ada 2)                    | Y  | Y  | Y  | Y  | Y* | Y* | Y  | Y  | Y  | Y   | Y   | Y   | Y   | Y   | Y   | Y*  | 19        | 16          |    |
| d NELSON, T. (Austin 31)             | Y  | Y  | Y  | Y  | N  | Y* | -  | -  | -  | Y   | Y   | Y   | Y   | Y   | -   | Y*  | 18        | 15          |    |
| d OLHOFT, W. (Herman 11)             | Y  | Y  | Y  | Y  | Y* | Y* | Y  | -  | Y  | Y   | Y   | N*  | -   | N*  | -   | Y*  | 38        | 29          |    |
| d PEHLER, J. (St. Cloud 17)          | Y  | Y  | Y  | Y  | -  | Y* | Y  | Y  | Y  | N*  | Y   | Y   | Y   | Y   | Y   | Y*  | 20        | 14          |    |
| d PENNY, T. (New Richland 30)        | Y  | Y  | Y  | Y  | Y* | Y* | Y  | Y  | -  | Y   | Y   | Y   | Y   | N*  | Y   | Y*  | 27        | 31          |    |
| d PETERSON, C. (Detroit Lakes 10)    | Y  | Y  | Y  | Y  | Y* | Y* | Y  | -  | Y  | Y   | Y   | Y   | -   | Y   | Y   | Y*  | 21        | 30          |    |
| r PETERSON, D. (Fairmont 27)         | N* | N* | N* | N* | Y* | Y* | Y  | Y  | Y  | N*  | N*  | N*  | Y   | -   | Y   | Y*  | 67        | 64          |    |
| d PETERSON, R. (Wyoming 19)          | Y  | Y  | Y  | Y  | N  | Y* | Y  | Y  | -  | Y   | Y   | Y   | -   | Y   | Y   | Y*  | 14        | 13          |    |
| d PETTY, E. (Mpls. 58)               | Y  | Y  | Y  | Y  | N  | Y* | Y  | Y  | N* | Y   | Y   | Y   | Y   | Y   | Y   | Y*  | 19        | 18          |    |
| r PILLSBURY, G. (Wayzata 42)         | N* | N* | N* | N* | N  | Y* | -  | Y  | Y  | -   | N*  | N*  | Y   | -   | Y   | -   | 58        | 39          |    |
| d PURFEERST, C. (Faribault 24)       | Y  | Y  | Y  | N* | Y* | Y* | Y  | -  | -  | Y   | -   | N*  | Y   | Y   | -   | Y*  | 42        | 22          |    |
| r RAMSTAD, J. (Plymouth 43)          | N* | N* | N* | Y  | N  | Y* | -  | Y  | -  | Y   | N*  | N*  | Y   | Y   | Y   | Y*  | 50        | 45          |    |
| r RENNEKE, E. (LeSueur 23)           | N* | N* | N* | N* | Y* | -  | Y  | Y  | Y  | N*  | N*  | -   | Y   | N*  | Y   | Y*  | 64        | 57          |    |
| d RUED, D. (Aitkin 13)               | N* | Y  | N* | N* | Y* | Y* | Y  | -  | Y  | N*  | N*  | N*  | Y   | Y   | -   | Y*  | 64        | 58          |    |
| d SCHMITZ, R. (Jordan 36)            | Y  | Y  | Y  | N* | Y* | -  | Y  | Y  | Y  | N*  | Y   | N*  | Y   | Y   | Y   | Y*  | 33        | 28          |    |
| d SETZEPFANDT, A. (Bird Island 21)   | Y  | Y  | Y  | N* | Y* | Y* | Y  | -  | Y  | Y   | N*  | N*  | Y   | Y   | -   | Y*  | 43        | 27          |    |
| r SIELOFF, R. (St. Paul 63)          | Y  | N* | N* | N* | Y* | -  | Y  | Y  | Y  | Y   | N*  | Y   | -   | N*  | -   | Y*  | 54        | 44          |    |
| d SIKORSKI, G. (Stillwater 51)       | Y  | Y  | Y  | Y  | Y* | Y* | Y  | -  | Y  | Y   | Y   | Y   | Y   | Y   | Y   | Y*  | 20        | 18          |    |
| d SOLON, S. (Duluth 7)               | Y  | N* | Y  | Y  | Y* | Y* | Y  | -  | Y  | N*  | Y   | Y   | Y   | Y   | Y   | Y*  | 33        | 17          |    |
| d SPEAR, A. (Mpls. 57)               | Y  | Y  | Y  | Y  | N  | -  | Y  | Y  | -  | Y   | Y   | Y   | -   | N*  | Y   | Y*  | 15        | 7           |    |
| d STERN, I. (St. Louis Park 41)      | Y  | Y  | Y  | Y  | N  | Y* | Y  | Y  | Y  | Y   | Y   | Y   | Y   | Y   | Y   | -   | 7         | 14          |    |
| d STOKOWSKI, A. (Mpls. 55)           | Y  | Y  | Y  | Y  | Y* | Y* | Y  | Y  | N* | Y   | Y   | Y   | Y   | Y   | Y   | Y*  | 25        | 24          |    |
| STUMPF, P. (St. Paul 64)             | Y  | Y  | Y  | Y  | Y* | Y* | Y  | -  | N* | Y   | Y   | Y   | Y   | Y   | Y   | Y*  | 27        | 16          |    |
| r TAYLOR, G. (Mankato 29)            | N* | Y  | N* | Y  | Y* | -  | -  | Y  | -  | N*  | N*  | N*  | Y   | N*  | Y   | Y*  | 62        | 48          |    |
| d TENNESSEN, R. (Mpls. 56)           | Y  | -  | -  | Y  | N  | -  | Y  | -  | N* | Y   | Y   | Y   | Y   | N*  | Y   | Y*  | 25        | 19          |    |
| r ULLAND, J. (Duluth 8)              | Y  | N* | N* | Y  | N  | Y* | Y  | -  | Y  | N*  | Y   | Y   | Y   | Y   | Y   | Y*  | 33        | 22          |    |
| d VEGA, C. (South St. Paul 52)       | Y  | -  | -  | Y  | Y* | Y* | Y  | Y  | -  | N*  | Y   | N*  | Y   | Y   | Y   | Y*  | 38        | 27          |    |
| d WALDORF, G. (St. Paul 66)          | Y  | Y  | Y  | -  | Y* | Y* | Y  | Y  | N* | N*  | N*  | N*  | Y   | N*  | Y   | Y*  | 53        | 30          |    |
| d WEGENER, M. (Bertha 12)            | Y  | Y  | Y  | -  | Y* | Y* | Y  | Y  | Y  | N*  | N*  | N*  | Y   | Y   | Y   | Y*  | 33        | 24          |    |
| d WILLET, G. (Park Rapids 4)         | Y  | Y  | Y  | Y  | Y* | Y* | Y  | -  | -  | N*  | Y   | Y   | Y   | Y   | -   | Y*  | 31        | 29          |    |

## KEY VOTES — Continued

**11. South Africa Investments (SF 1637):** This bill would have prohibited State government investments in any financial institution making loans to South Africa. Ironically, many supporters of this action against a friendly country that has shown the capacity for improvement support trade and investment in the Soviet Union and Red China, immutably totalitarian and imperialistic nations bent on the ultimate eradication of all freedom. LEA opposes this bill, which passed on final votes of 85-38 in the House, and 36-29 in the Senate, but was justifiably vetoed by the Governor. Authors: STATEN, SPEAR

**12. AMTRAK Subsidy (SF 1621):** Tucked away in an innocuous van pooling bill is yet another State subsidy for the AMTRAK North Star Line train, this time in the amount of \$200 thousand. Thanks largely to incessant lobbying, this project has clearly exemplified President Reagan's statement that "a government agency is the nearest thing to eternal life we'll ever see on this earth." LEA opposes this bill, now law, which passed on final votes of 68-54 in the House, and 34-29 in the Senate. Authors: VOSS, MERRIAM

**13. Legal Aid Funding (SF 1666):** This bill will fund non-profit legal assistance corporations by adding a \$10 surcharge to most civil filing fees. There is absolutely no reason why the average citizen should in any way be forced to fund these groups, whose political and social activism frequently results in increased government spending, taxation, and regulation. LEA opposes this bill, now law, which passed on final votes of 87-34 in the House, and 57-1 in the Senate. Authors: WYNIA, M. HANSON

**14. Pari-Mutuel Betting (SF 303):** This bill would amend the Minnesota Constitution to permit the Legislature to authorize on-track pari-mutuel betting on horse racing. Even if the most optimistic revenue estimates of \$15 million a year were to come true, that would be less than one-half of one percent of the current \$8.5 billion biennial budget. The State doesn't need "revenue raisers" like this, it needs to make some significant spending cuts. Surely there can be no doubt that this "sport" will have high social costs — the rise of a get-rich-quick attitude, and an increase in illegal gambling, robbery, shoplifting, bad check passing, and crimes of all kinds. LEA opposes this bill, which passed on final votes of 77-49 in the House, and 36-26 in the Senate. Authors: REDING, PURFEERST

**15. Housing Loans (HF 1894):** This bill expands municipal housing powers by authorizing the planning, implementation, and financing of housing rehabilitation and energy improvement loans and revenue bonds. The profligate issuance of loans and revenue bonds is a form of deficit spending — the state and local governments' equivalent of the Federal government's power to print money — and it virtually guarantees tax increases in years to come and mortgages the future. LEA opposes this bill, now law, which passed on final votes of 119-7 in the House, and 41-0 in the Senate. Authors: VELLENGA, KNOLL

**16. Drunk Driving (HF 1484):** This bill increases the penalties for DWI offenses and makes apprehension and conviction of intoxicated drivers easier. It is a commendable first step, but even stronger penalties will probably be needed to really get the problem under control. LEA supports this bill, now law, which passed on final votes of 130-0 in the House, and 60-0 in the Senate. Authors: VANASEK, DAVIES

**17. "Strike Proofing" Farm Commodities (HF 216):** This bill provided that the governor would have the power to intervene in labor-management disputes which interfere with the intrastate movement of farm commodities. A law like this could prevent strikes such as the recent one by the Duluth grain millers which cost the region at least \$1 billion. Its devastating effects are still being felt. Although the bill has many supporters, it has not been allowed out of committee for a regular floor vote throughout 1981 and 1982. In 1981 an attempt was made to take the bill to the floor, but it was ruled out of order by the chair. The ruling was appealed but upheld by a vote of 68-61, the vote LEA is using. The 61 legislators voting "no" are in effect voting for the bill. There was no Senate vote. We hope the bill will be re-introduced in 1983 and urge your support. Authors: STADUM, NYSETER, LUDEMAN, AASNESS, VALAN

### *Proposed Constitutional Amendments on November Ballot*

● **Pari-Mutuel Betting:** (see key vote number 14).

● **Railroad Rehabilitation (HF 1017):** Would allow the Legislature to authorize the sale of \$200 million in bonds for the improvement of railroad facilities. LEA believes that state government should be cutting back and concentrating on essential services, and not expanding into an area best handled by the private sector.

● **Trunk Highway Bonds (SF 588):** Would remove restrictions on the interest rate and amount (presently 5% and \$150 million) of trunk highway bonds the State may issue. LEA feels that nothing could better show this Legislature's priorities than its denying Initiative-Referendum and an amendment limiting State spending places on the ballot, while giving this spending provision another opportunity to become law and improving its chances by requiring it to be second on the ballot.

● **Court of Appeals (HF 1727):** Would allow the Legislature to establish a twelve judge intermediate court of appeals to ease the burden on the State Supreme Court. If the Supreme Court is so busy; why is the Legislature putting it in charge of distributing funds to legal services programs? LEA believes that the problems in Minnesota's legal system will be solved not by adding more judges, but only by a change in the existing judicial philosophy that encourages unreasonable leniency toward criminals, excessive litigation, and unconstitutional meddling.

LEA  
2525 County Road I  
Minneapolis, MN 55432

